

NORTHERN DIVER

MILITARY, RESCUE, COMMERCIAL & SPORT DIVING SPECIALISTS



INST-10 CLASSIC CONTENTS GAUGE

USER MANUAL

INTRODUCTION

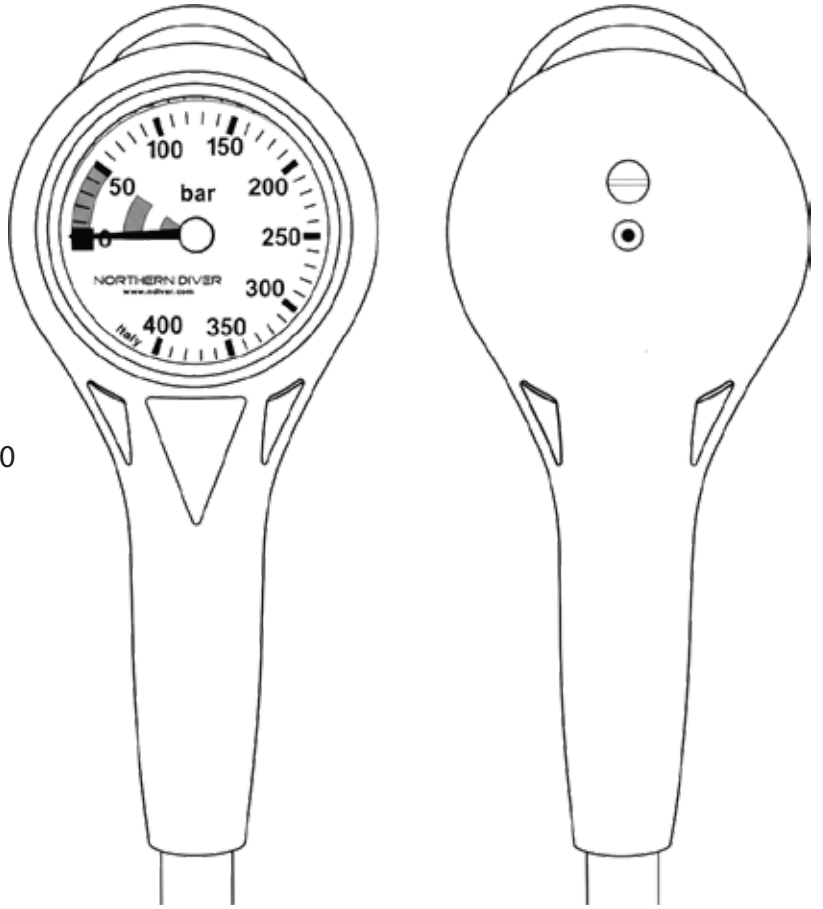
Thank you for choosing the **Northern Diver INST-10 Classic Contents Gauge**.

The INST-10 is a compact, high-quality submersible pressure gauge (SPG) designed to accurately monitor the pressure of your scuba cylinder. Manufactured in Italy using premium materials, it offers reliable performance and durability for recreational and professional diving applications.

Please read this manual carefully before use and retain it for further reference.

PRODUCT FEATURES

- Compact, low-profile design
- One-piece nickel-plated brass body
- Copper beryllium spiral Bourdon tube mechanism
- Luminescent, easy-to-read dial
- Polycarbonate impact-resistant lens
- Protective rubber housing with swivel connection
- High-pressure thermoplastic hose
- Suitable for cylinder pressures up to 400 bar



SPECIFICATION

Specification	Details
Maximum Pressure	400 bar
Scale	0-400 bar
Graduation	10 bar increments
Reserve Zone	Red marking from 50 bar to 0 bar
Face Diameter	42mm
Overall Diameter	50mm
Hose Length	80cm (32")
Weight	275g
Window Material	Polycarbonate
Body Material	Nickel-plated brass
Mechanism	Copper beryllium spiral Bourdon tube
Certification	EN250:2014 & Regulation (EU) 2016/425
Country of Manufacture	Italy

BEFORE DIVING

- Inspect the gauge body and hose for damage, cracks or excessive wear.
- Check all connections for leaks.
- Confirm the gauge returns to zero when disconnected.
- Slowly open the cylinder valve while observing the gauge.
- Verify the pressure reading matches the expected cylinder fill.

Do not use the gauge if any damage or leaks are detected.

DURING DIVING

Monitor your cylinder pressure regularly throughout the dive.

Plan your dive so that sufficient breathing gas remains for:

- A safe ascent.
- Safety stop(s).
- Surface conditions.
- Emergency gas reserve.

The red section of the dial (below 50 bar) indicates reserve pressure. Begin your ascent before reaching this zone unless your dive plan specifically accounts for reserve gas.

AFTER DIVING

- Rinse thoroughly in fresh water.
- Operate the swivel gently while rinsing to remove salt deposits.
- Allow to dry completely before storage.
- Store away from direct sunlight, excessive heat and chemicals.
- Avoid impacts or dropping the gauge.

MAINTENANCE

The INST-10 contains precision components.

- Have the gauge inspected annually by an authorised service technician.
- Replace the HP hose if damaged or if recommended during servicing.
- Do not attempt to dismantle or repair the gauge yourself.
- Always replace damaged O-rings with compatible components.

SAFETY INFORMATION

This gauge is designed solely for measuring scuba cylinder pressure.

- Maximum working pressure is 400 bar.
- Use only with compatible scuba equipment.
- Never exceed the rated pressure.
- Do not use if the gauge has been dropped or damaged.
- Avoid exposure to aggressive chemicals or solvents.
- Always dive within the limits of your training and certification.

Failure to follow these instructions could result in equipment failure, serious injury or death.

STORAGE

Store the gauge:

- Clean and dry.
- Out of direct sunlight.
- Between 5°C and 40°C where possible.
- Away from sharp objects and heavy loads.

DISPOSAL

Dispose of the product in accordance with local regulations for metal, rubber and plastic components. Do not dispose of with household waste where recycling facilities are available.

WARRANTY

This product is warranted against defects in materials and workmanship under the Northern Diver warranty terms.

The warranty does **not** cover:

- Normal wear and tear
- Accidental damage
- Improper use
- Incorrect installation
- Unauthorised repairs or modifications
- Damage caused by poor maintenance

Retain your proof of purchase for any warranty claims.

MANUFACTURER INFORMATION

Distributed by:

Northern Diver (International) Ltd.

Manufactured in Italy.

Certified in accordance with:

EN250:2014

Regulation (EU) 2016/425

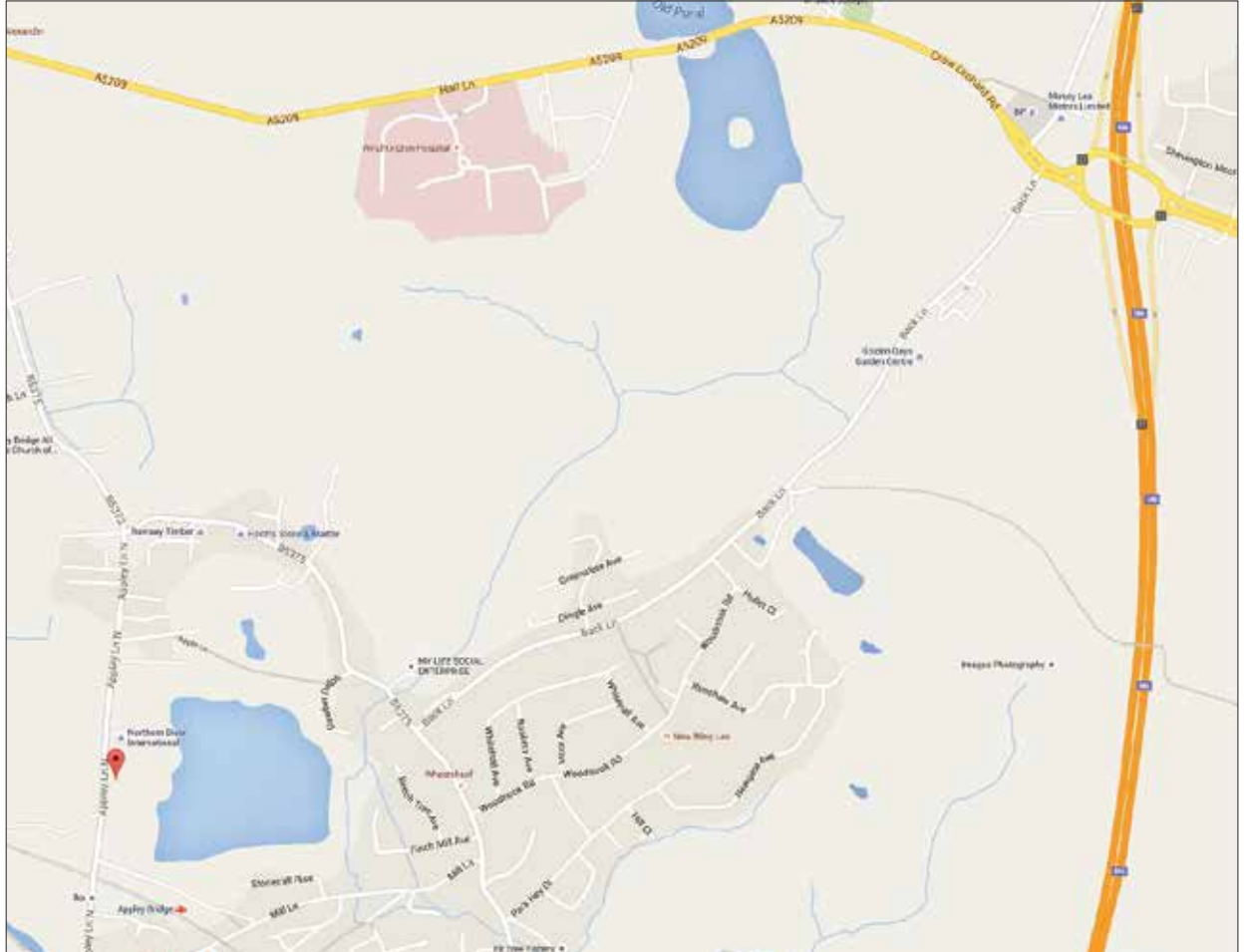
<https://www.ndiver.com/inst-10-classic-contents-gauge>



Find Us Online.

View our extensive product range

www.ndiver.com



We are happy to answer any questions you may have.

We are located in Appley Bridge, Lancashire, UK - only 5 mins from the M6 motorway (J27). Manchester & Liverpool international airports are only 40 mins away. Wigan North Western rail station is 2 hrs & 3 mins from London Euston. We are more than happy to collect clients and return them after their visit.



www.ndiver.com

Tel: +44 (0) 1257 25 44 44

Email: info@ndiver.com

East Quarry, Appley Lane North, Appley Bridge, Wigan, Lancashire, WN6 9AE, UK